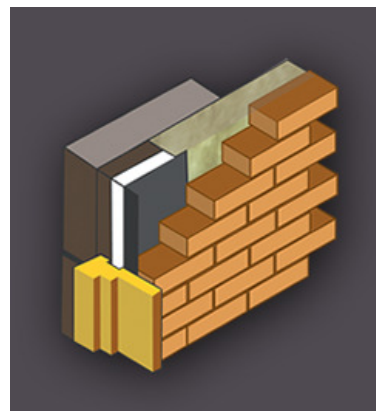


ARC Insulated DPCs

The ARC Insulated DPCs are a polyethylene insulated DPC which has been developed to close masonry cavities for thermal applications. The primary reason for fitting the ARC Insulated DPC is to close off cavities around window and doors preventing cold bridging. Can easily be installed as the brick and block work progresses where a traditional block return is used.



- Closes off cavities when a block return is used
- Easy to install
- Exceeds the minimum requirement of 0.45 m² K/M provided the window is set back 30mm from the inner face of the outer brickwork
- Prevents cold bridging
- Manufactured to NHBC standards
- Also available with a high performance DPC on request

Fitting Instructions

The ARC Insulated DPCs are easily installed as the brickwork progresses before the window or door is installed. The DPC sits against the outer brickwork to prevent moisture penetration. When joining it is recommended the DPC should be fully lapped by at least 100mm with the insulation tightly butted.

Standard Dimensions:

Polyethylene Insulation	Polyethylene DPC	Pack Size
17mm x 100mm x 10m coil	165mm width x 10 metre coil.	6
17mm x 140mm x 10m coil	225mm width x 10 metre coil.	5

Technical Data:

Insulation	Polyethylene DPC
<ul style="list-style-type: none"> • Grey polyethylene insulation • Thermal conductivity 0.034 W/mk • CFC and HCFC free 	<ul style="list-style-type: none"> • Black polyethylene DPC • Embossed to assist mortar adhesion • Manufactured to the requirements of BS6515

Non standard sizes available on request

ARC Building Solutions Limited

Unit 30a, Headway Business Centre
Knowles Lane
Bradford
West Yorkshire. BD4 9SW

t: 01274 680 577
f: 01274 680 598
e: info@arcbuildingsolutions.co.uk
w: www.arcbuildingsolutions.co.uk